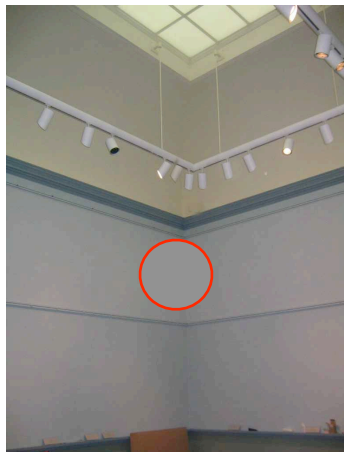


Product: Invisible Motion Detector

Primary Use: Any Project With An Architect
Part of the Invisa Series

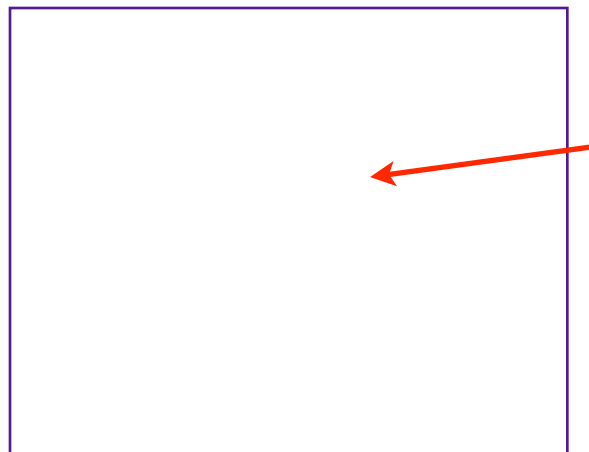
Availability: Same day Delivery; One Million Colors, including 850 Shades of White



Above left: Invisa Detector in situ



Center: Anti-Gravity mount.



Above right: The Invisible detector

The World's First Invisible Motion Detector

Now even the most discriminating and demanding architect can have his way with the new **Invisa series** invisible motion detector. This product mounts on any surface including walls, ceilings, or floors. It is completely invisible and cannot be detected in even the brightest light. Because it is totally wireless and requires no power, conduit and power costs are virtually eliminated when it comes to the security system. While the device is expensive and is likely to break the client's budget, most architects will find it well worth the hardship because, well, it's invisible, and how it looks is always more important than how it works. Besides, it's the client's money!

The **Invisa-Detector** is part of the Invisa series of architectural security devices that include the **Invisa-Cam** and the **Invisa-Guard**. When security devices offend, you need Invisa!

While the Invisa is available in one million colors, every color takes on the color characteristics of the surface upon which it is mounted within two minutes of being installed and the device becomes completely invisible. Its patented anti-gravity mounting method requires no holes, no screws and no mounting hardware. It can be mounted at any height.

Just think of the time savings: No coordination or attention to detail required! Even an architectural intern can handle this aspect of the project. Now the project architect can tend to the really important aspects of the job like interior finishes and keeping ceilings pristine!

Characteristics

Completely invisible Requires no wires Color matches mounting surface Takes no space UL listed Weighs nothing Trouble-free
(Anti-Gravity mounting system not available in Minnesota or where prohibited by law. Not available for exporting to the Middle East)

Does this product work? Who cares! It's invisible.

Suggested Retail: \$1599 each

INSTALLATION: ADD \$800 PER UNIT

ANTI-GRAVITY MOUNTING SYSTEM: \$950 EACH

STEVE KELLER & ASSOCIATES, INC. 555 Granada Blvd. Suite G-3 Ormond Beach, FL 32174 (386) 673-5034

Museum Security Consultants---Consultants to architects on cultural property projects worldwide

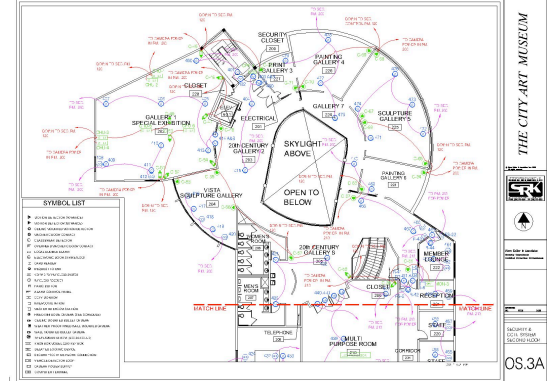
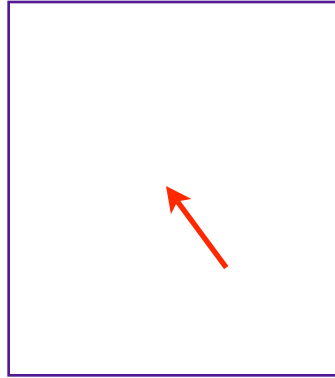
www.stevекeller.com

Product: Invisible Security Camera

Primary Use: Any Project With An Architect

Part of the Invisa Series

Availability: Yesterday; All models always in stock. No coordination or advance planning required.



Above: Invisa Camera in situ

Center: Photo of model I-1000

Above: Diagram shows auto install feature

The World's First Invisible Security Camera

Now even the most discriminating and demanding architect can have his way with the new **Invisa series** invisible security camera. Like our invisible motion detector, this product simply cannot be seen by the naked eye and is ideal for the most demanding project. It is certain to help you qualify for the Pritzker Prize or even architectural immortality. And our special patented "Remote Install" feature eliminates the need to hire one of those pesky security contractors. Here's how it works. Simply buy our special AutoCad ToolPak plug in and symbol library, give your camera symbol the specified attribute, then place the symbol on your "Issued for Permit" drawings and like magic, the camera appears in the gallery during the specified week of construction. To aim the camera, a task normally difficult since the camera is invisible, just re-aim the symbol on the Record Drawing submittal drawings and the camera magically zooms, tilts and pans as required. If you don't like the camera location, just move the symbol and the camera location changes.

No more RFIs, no more change orders, and no more cost overruns! Think of the hours you can save dealing with reality and the time you can now devote to the important aspects of your building project such as how it will look in "Architectural Digest".

Just like the camera, the monitor is invisible, takes no space and requires no wires or cabling and no power so you no longer have to provide that security closet that detracts from the gallery space and requires annoying pre-planning or design skills! As a bonus, the security control room can now be located just about anywhere. Tuck it away in the sub-basement, under a stair or other undesirable location. Think how much time, effort and stress this saves you in dealing with your security consultant!

The **Invisa-Detector** is part of the Invisa series of architectural security devices that include the **Invisa-Cam** and the **Invisa-Guard**. When security devices offend, you need Invisa!

Characteristics

Completely invisible Requires no wires Matches any surface Needs no power or conduit Weighs nothing No installation required
(Sorry, the Anti-Gravity Mounting System may not be exported to the Middle East) No DVR or monitor needed when you specify InvisaDVR.

We know that this product may be costly, but what do you care, it's the client's money. And, it's invisible. That's what matters! Does it work? Who cares!

We can do magic, but magic costs just a bit more.

Suggested Retail: \$2500 each

INSTALLATION SOFTWARE: ADD \$1,000 PER CAMERA, MONITOR AND DVR

ANTI-GRAVITY MOUNTING SYSTEM: \$950 PER CAMERA

STEVE KELLER & ASSOCIATES, INC. 555 Granada Blvd. Suite G-3 Ormond Beach, FL 32174 (386) 673-5034

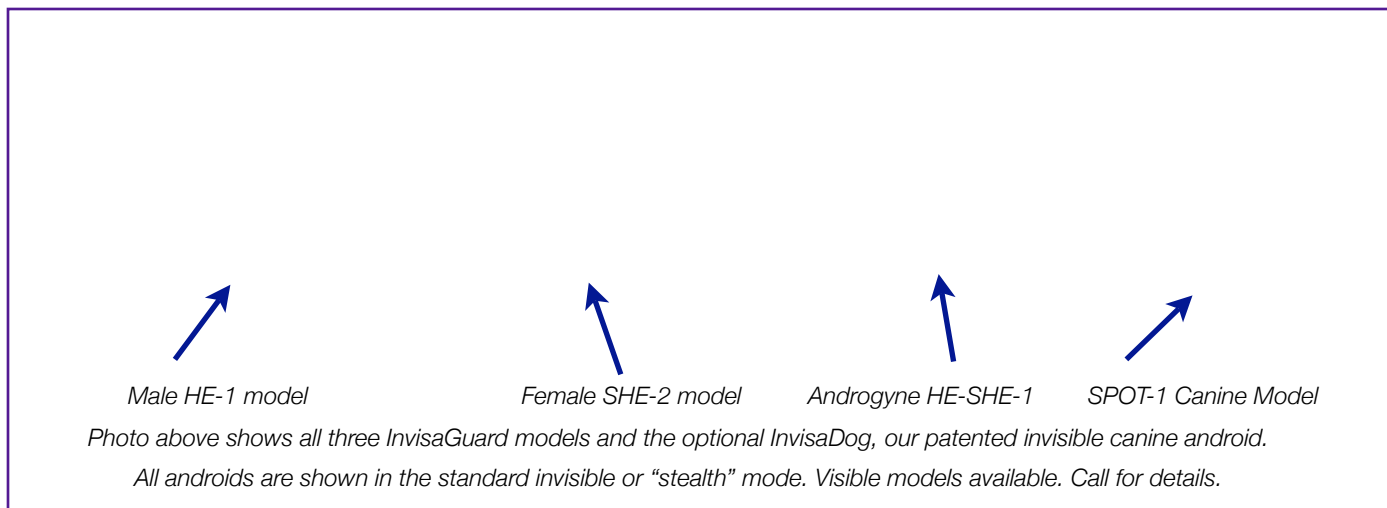
www.stevkeller.com

Museum Security Consultants---Consultants to architects on cultural property projects worldwide

Product: Invisible Security Officer

Primary Use: Projects Requiring Reliable Security Staff
Part of the Invisa Series

Availability: Immediate.



The World's First Invisible Security Officer Android

We know how annoying it can be dealing with people when you can be spending your time reading the paper or surfing the internet, so we've invented the world's first totally invisible android security officer for museums. Now the security manager can spend his or her time on really important projects such as attending ASIS golf outings. No more manual writing. No more training. Minimal programming required. And if you are a museum Director or Human Resource Manager, this product is for you. Reduce the time you spend dealing with blue collar workers and their problems!

The photo above shows our male, female and androgynous models. The female is equipped with the InvisaMace product while the male is shown wearing his invisible jump suit accessory (sold separately). The androgyne is naked and comes with no accessories or equipment. Note the optional **InvisaDog**. SPOT-1 is a patrol canine guaranteed not to soil museum floors or mistake statues for hydrants.

The **InvisaGuard** is part of the Invisa series of security devices and products. Coming this Spring: InvisaCurator. Because we know that Curators should be seen and not heard, we've developed the first Invisible AND silent museum curator. Now, she won't be seen or heard!

Characteristics

Completely invisible Plutonium Powered Never Sleeps No Pension Fund, Benefit or ERISA Requirements* Union Free Never Calls In Sick
(Sorry, the Plutonium powered model may not be exported to the Middle East and is not available in Wisconsin or other Nuclear Free Zones)

We know that this product may be costly, but what do you care, you'll fund it with a grant!

"We can do magic, but magic costs just a bit more."

Suggested Retail: \$24,999 each

INSTALLATION SOFTWARE: \$500 PER UNIT. FOR THE PLUTONIUM MODEL, ADD \$12,500 PER ANDROID
ON SITE PROGRAMMING AVAILABLE

*** CALIFORNIA RESIDENTS MUST PAY WORKERS' COMP FOR ALL MODELS EXCEPT THE SPOT-1**

STEVE KELLER & ASSOCIATES, INC. 555 Granada Blvd. Suite G-3 Ormond Beach, FL 32174 (386) 673-5034

www.stevекeller.com

Museum Security Consultants--Security System Design and Engineering--Training Resources at www.horizon-usa.com